



Color Coated Products
彩涂产品

Satisfying your Any Steel Needs

山东昊轩史迪钢铁有限公司（简称昊轩钢铁）是一家成立在山东青岛的专注于向石油天然气，化肥和电力以及房屋建设等领域提供质量可靠价格合适的彩涂钢制品。

我们注重质量优先，位于滨州的生产工厂已通过ISO9001质量体系认证，产品完全满足国际标准和客户规范要求。

我们的主要产品有：

- 彩色涂层钢板-PPGI
- 镀铝锌彩涂板-PPGL
- 彩涂瓦楞板

公司技术力量雄厚，工程师团队经验丰富，引进国际先进的彩涂设备系统，配置自动化中控系统。主要生产厚度0.135mm-1.0mm，宽度80cm-125cm的各种颜色和规格的彩涂钢板，产能为12万吨年，广泛应用于建筑，造船，车辆制造，家具和电器行业。

公司使命



依托多年累积的技能专长，行业经验和资源，向我们的客户提供质量稳定和价格合适的彩涂产品

公司远景



成为我们客户，供货商信赖的首选合作方

价值观



事事有反馈，件件有结果



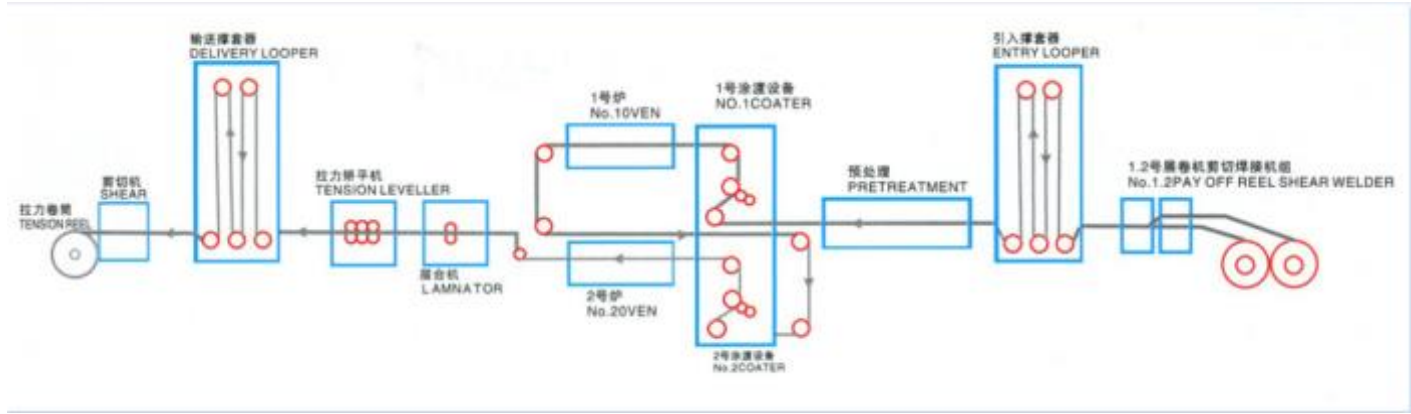
产品定义

彩色涂层钢板是将冷轧钢板、镀锌钢板，进行表面化学处理后涂敷（辊涂）或复合有机薄膜（PVC膜等），再经过烘烤固化而制成的产品，由于其连续生产线上成卷生产，故也称之为彩涂钢卷。

产品特点

既具有钢铁材料机械强度高，易成型的性能，又兼有涂层材料良好的装饰性和耐腐蚀性。

工艺流程



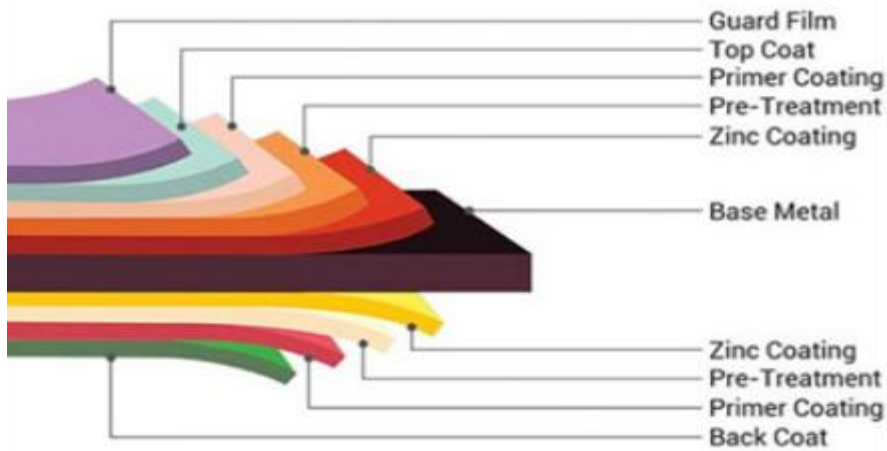
Capacity:120K Mts per year
Speed:120Meter per Min

镀锌彩涂板-PPGI

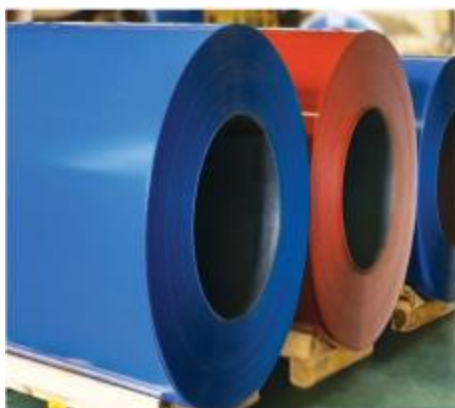
产品规范

彩板规格：厚度0.14-0.8mm,宽度800-1250mm,颜色：蓝，红，白等任意颜色
 涂层种类：聚酯，硅改性聚酯，聚氨酯，偏聚氟乙烯，高聚酯，环氧树脂，丙烯酸等。

Capacity:120,000 tons per year
 Thickness:0.14-0.8mm
 Width:800-1250mm
 Color:Blue,Red,White ect RAL
 Paints:Standard Polyester(PE),PVDF
 Paint Thickness:Min 15/5 microns, Max 30/20 microns
 Coil ID:508 or 610mm
 Coil Weight:3-7Mts
 Base Material: Hot Dipped Galvanized Steel or Cold Rolled Steel
 Zinc Coating: 80-275g/m²
 Standard&Grade: ASTM A755,EN10169,JIS G3312



Coating Structure
PPGI



产品定义

镀铝锌彩涂板是指将镀铝锌钢板作为基板经过表面脱脂，磷化处理后，涂上有机涂料经烘烤制成的产品。

Pre-Painted Alu-Zinc is produced from the color coating line Input sheets are put into flushing, pickling phases and coated with an additives to enhance the adhesives, then, it is covered with the primer before it is officially painted and dried.

Capacity:120,000tons per year

Thickness:0.14-0.8mm

Width:800-1250mm

Color:Blue,Red,White ect RAL

Paints:Standard Polyester(PE),PVDF

Paint Thickness:Min 15/5 microns, Max 30/20 microns

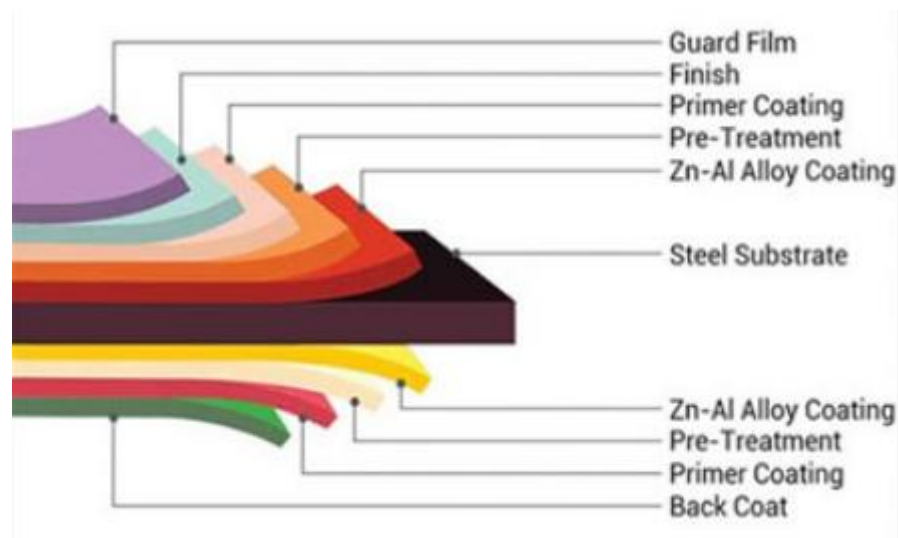
Coil ID:508 or 610mm

Coil Weight:3-7Mts

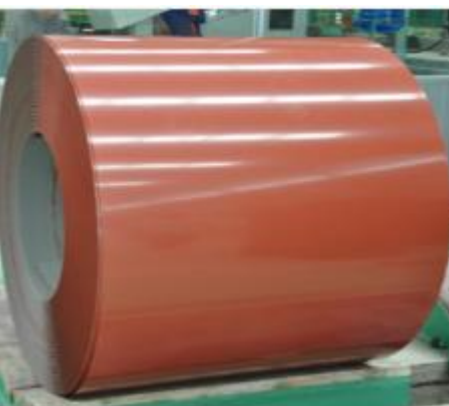
Base Material: Al-Zinc steel coils

Al-Zinc Coating: 40-150g/m²

Standard&Grade: ASTM A755,EN10169,JIS G3312



Coating Structure
PPGL



彩涂瓦楞板-Corrugated Sheets

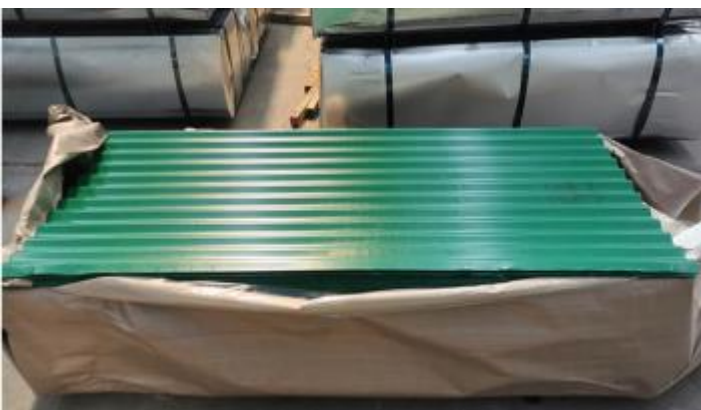
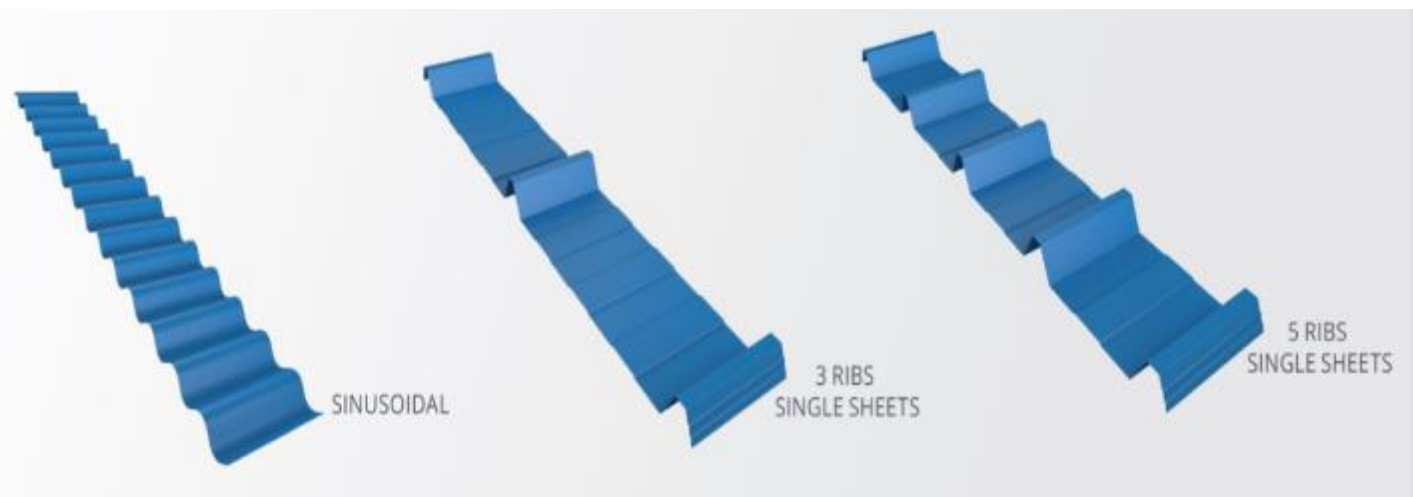
产品定义

彩涂瓦楞板是指将镀锌彩涂卷或者镀铝锌彩涂卷作为基板经过冷成型压制或者折弯形成的背面为瓦楞形状的产品。

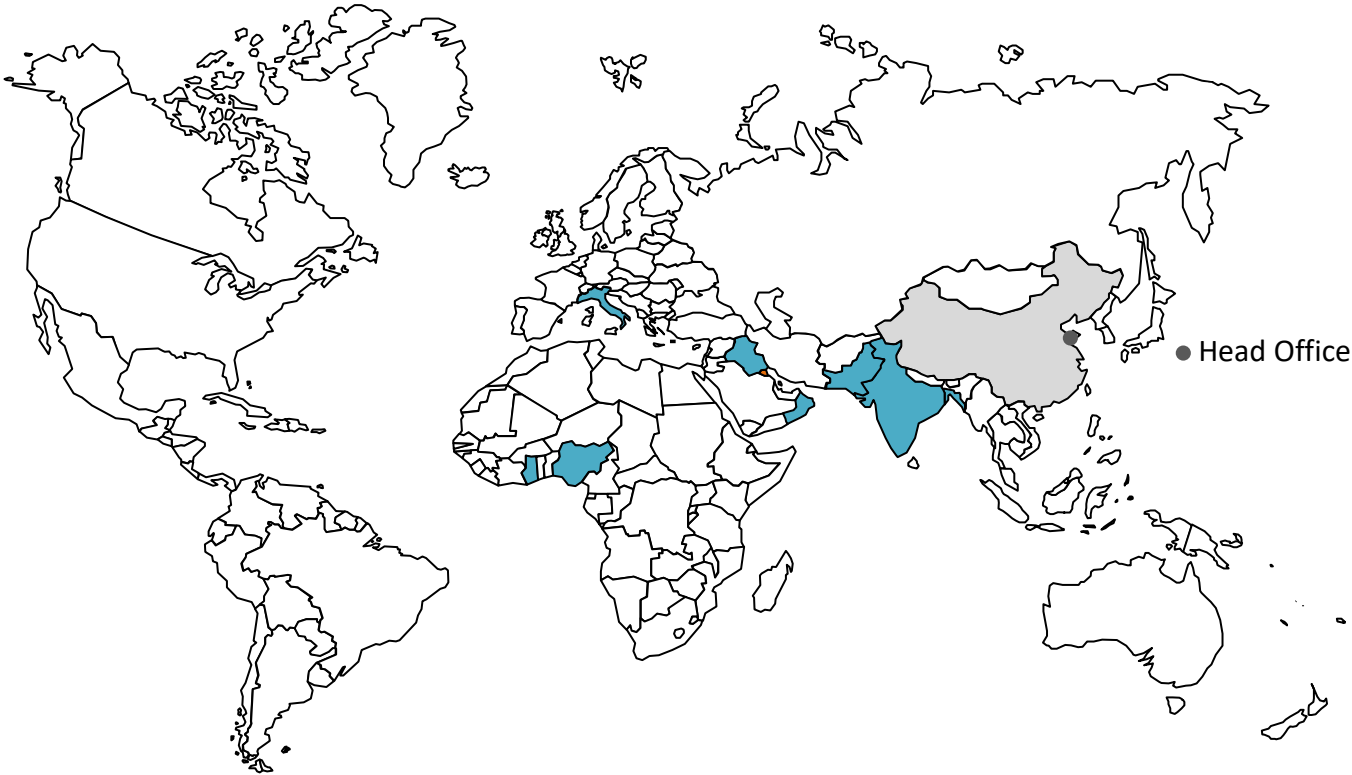
Galvanized and Galvalume corrugated metal sheet, are tough, lightweight, and weather-resistant materials that provide advanced protection qualities that cannot be matched by any other type of material.

Corrugated sheet metal and panels are manufactured through a cold-form process where they are pressed and roll-formed to create the desired corrugated shape

Capacity:100,000tons per year
 Thickness:0.12-2mm
 Width:30-1250mm
 Length: 12000mm(subject to transport condition)
 Color:Blue,Red,White ect RAL
 Paints:Standard Polyester(PE),PVDF
 Paint Thickness:Min 15/5 microns, Max 30/20 microns
 Base Material: Al-Zinc steel coils or Cold Rolled Coils
 Zinc/Al-Zinc Coating: 275g/m2
 Standard&Grade: ASTM A755,EN10169,JIS G3312

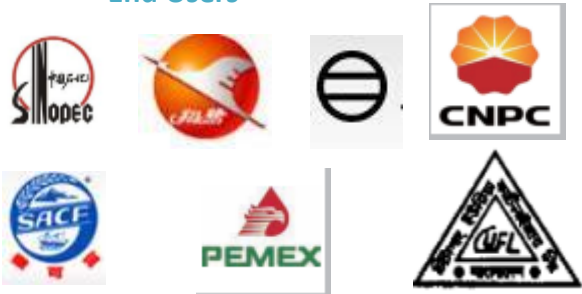


We are increasing our footprint globally following sucessful delivery on several orders receiving from our customers around the world, which underpins our committment to serve more customers supporting their project requirements for steel products on tight job schedule.



End Users

EPC Contractors



South Asia Region :	Thailand	Pakistan	India	Bangladesh
Middle East Region :	UAE	Kuwait	Iraq	
Africa Region :	Nigeria	Ghana		



办公地址:

山东省青岛市黄岛区长江东路**443**号福瀛大厦**1110**室

Tel. :+86-0532-8098-2117

Email:sales@hxsteelcn.com

Web :www.hxsteelcn.com

工厂地址:

山东省滨州市博兴县店子镇工业园

Tel. :+86-0543-2963908

Email:sales@hxsteelcn.com

Web :www.hxsteelcn.com